



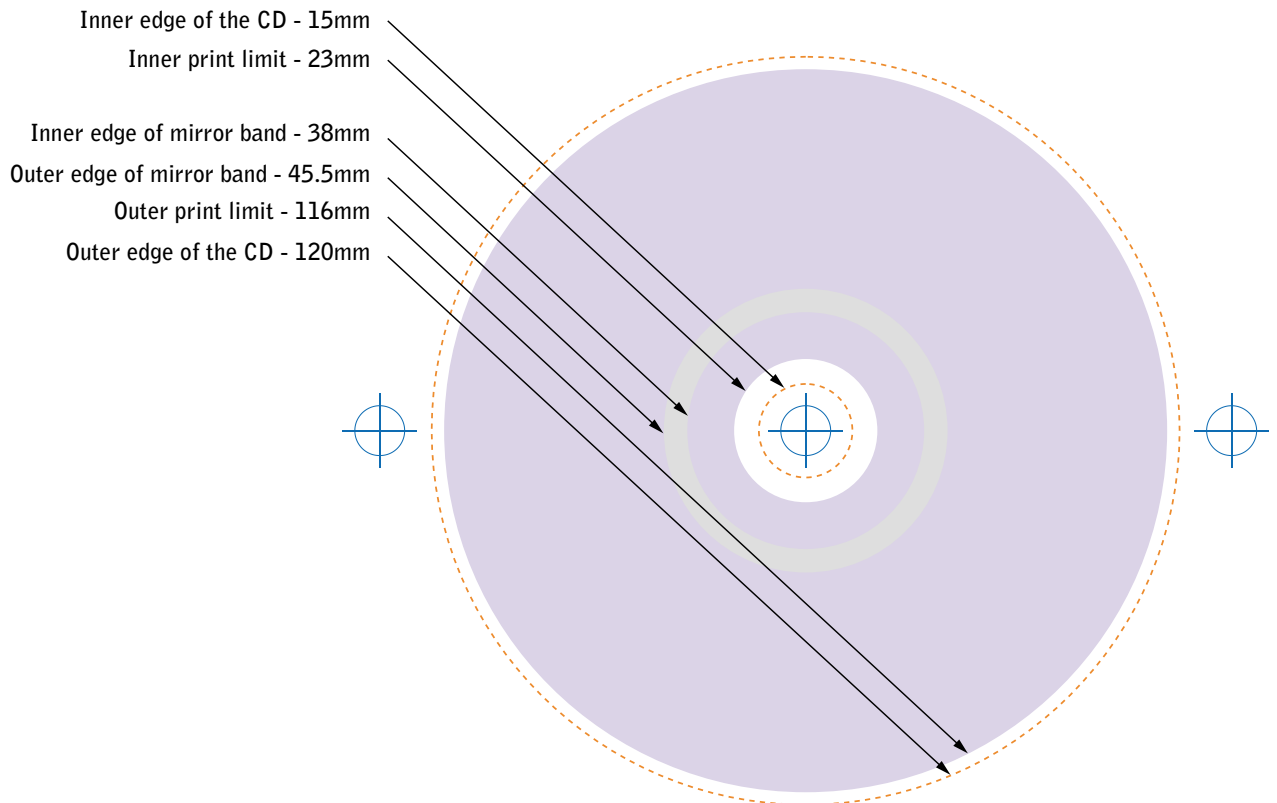
# Disc Label and Printed Materials Guide and Specifications

CD Label art is 1-3 Spot Colors  
All Inserts are Printed in Process Color (CMYK)

## The Disc

"Where the Parts of Our Discs Are."

Center hole:	15mm diameter
Outer physical edge:	120mm diameter
Inner print limit:	23mm diameter
Outer print limit:	116mm diameter
Outer edge of mirror band:	45.5mm diameter
Inner edge of mirror band:	38mm diameter



## The Disc Label Films

"A Reminder - What Films Do to Your Artwork."

- 1: The center hole area (23mm diameter) will be knocked out - no image will bleed inward beyond this 23mm circle. The actual hole opening is 15mm.
- 2: No art will bleed outward beyond a 116mm diameter circle (the outer edge of the physical disc is 120mm).
- 3: All halftones will be screened at 100 lpi.
- 4: Trapping will be stipulated at 0.35 points.

---

## Disc Label Files

“How Your Files Should Look..”

- 1: Be absolutely sure that all placed image files, screen fonts and printer fonts are included on your disk along with your artwork files.
- 2: Include composite, good quality proofs of all files needing output.
- 3: Include a printout of the complete contents list of your submitted disk.
- 4: Be sure you've followed all measurement and placement specifications mentioned elsewhere on this sheet and on the templates.
- 5: Be sure you've reviewed all guidelines as to correct knockouts and masks as it applies to center hole and edge printing limit.
- 6: Include the name and telephone number of the actual person who created the contents of the disk.
- 7: We can accept electronic files on a floppy, Zip disk, Jaz Disk, or CD-R. Please ship with your data/audio master disc.

---

## Disc Label Artwork Reminders

“Avoiding The Duh! Factor”

- 1: Try to avoid using any typeface smaller than 6 points.
- 2: A serif font, like Times or Garamond, is difficult to print if less than 7 points. A less delicate font like Helvetica or Univers works better at small point sizes.
- 3: Any type reversing out of a color should not be less than 7 points.
- 4: Type reversing out of the four process colors should not be less than 8 points.
- 5: If you are building type out of the four process colors, go no smaller than 10 points.
- 6: Don't Forget - Most colors will change when printed over each other so it is often necessary for artwork and type to have their "under-color" knocked out before laying in your trapped artwork or type. Colors will be more accurate when printed over a base-coat of white. Black can overprint without the need for a knockout. And also remember that white is counted as one of the 1-3 spot colors if required.
- 7: All screened areas of the disc are printed using a 100 lpi screen.

Questions? Contact [artwork@cdcentric.com](mailto:artwork@cdcentric.com)

Next Page - Printed Materials

## Insert, Booklet and Tray Card Specifications and Tips

Keep all readable information a minimum of 2mm from all trim and perf lines.

We don't suggest ever using type smaller than 8 points when reversing out of a color field. You may not be happy with the results.

Extend artwork a minimum of 4mm beyond trim lines for accurate bleeds.

A Colorkey, Matchprint, or very high quality inkjet output should accompany your artwork files - this way we will know what you think it should look like.

Cut lines, score lines, and registration marks are shown on the templates and should be paid attention to.

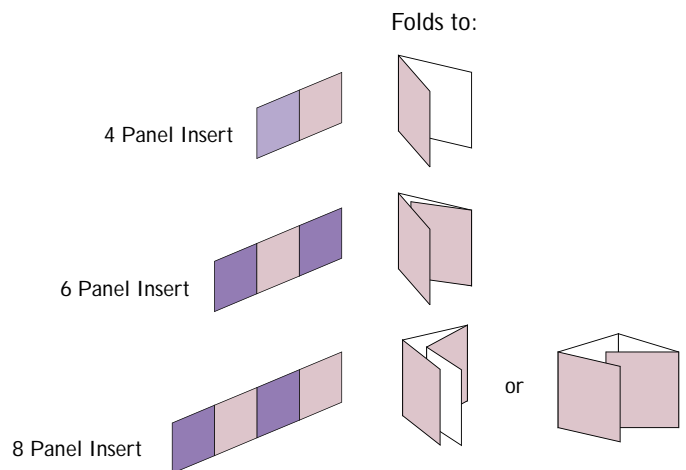
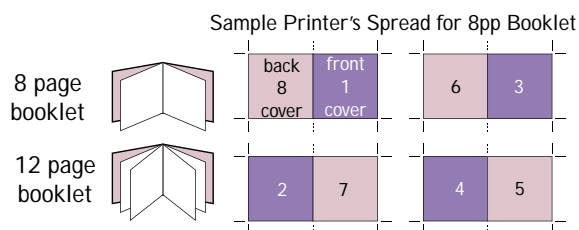
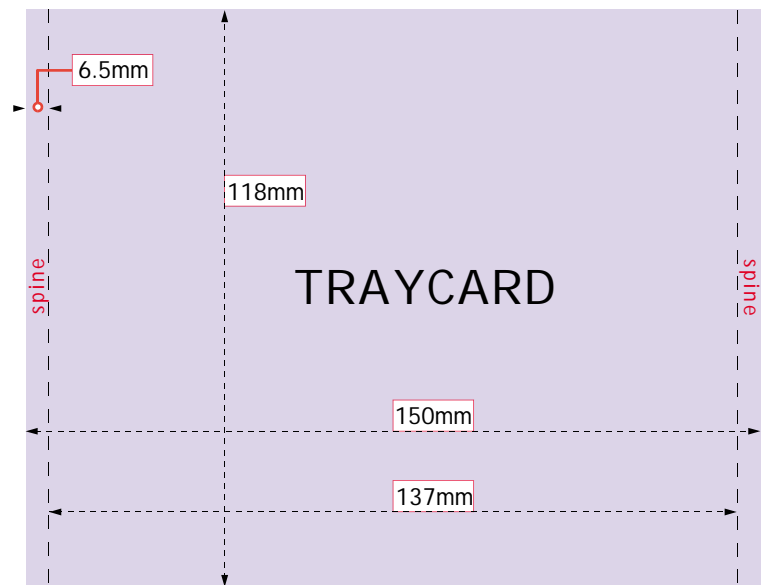
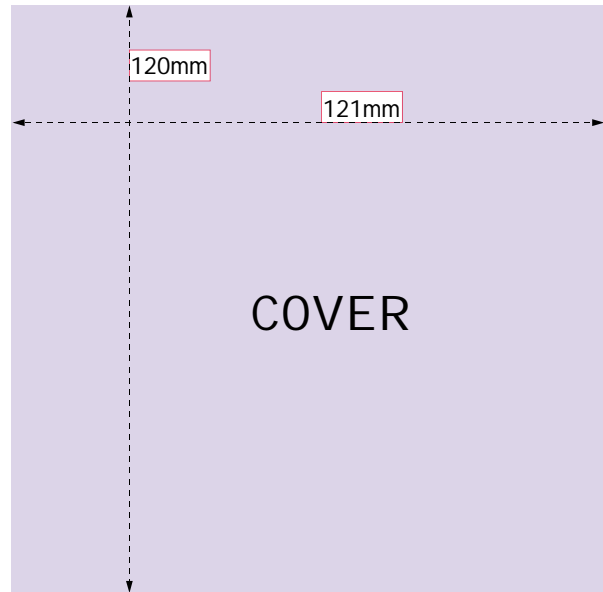
All folder panels of a particular side must appear together as they are expected to be printed. Booklet pages must appear as a 2-page printer spread—for example: pages 2 and 7 (of an 8-page booklet) would appear together with score marks dividing them.

The paper stock is coated on both sides for a high quality result.

We highly recommend the use of our provided templates. Even if you have your own, please take the time to review the CDCentric.com template files - some of the information may be unique to our processes.

If you have questions please contact:

artwork@cdcentric.com



---

## CShell Insert Information

Remember to allow at least 4mm (~1/8 in.) bleed.

Allow a 5mm "buffer" inside of trim lines for text. This produces most attractive results.

We can also produce a "donut" (round) insert. The template is available on our Web site.

If you need additional information or have a question contact:

artwork@cdcentric.com

